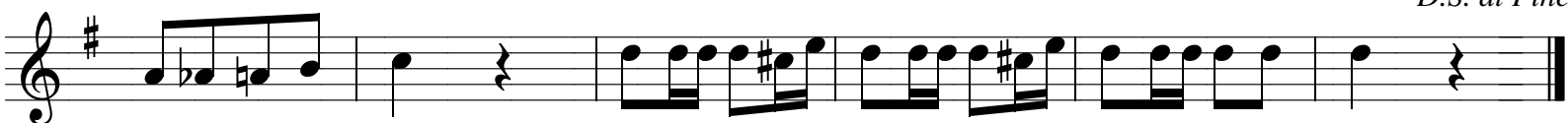
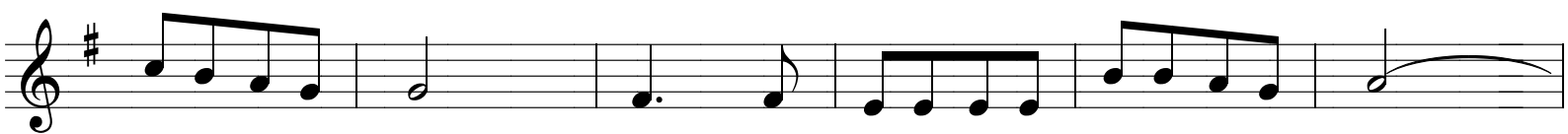


\*Geef miech dreij daog\*

The image displays a musical score for the piece "Geef miech dreij daog". The score is written in G major (one sharp) and 2/4 time. It consists of ten staves of music. The first staff begins with a treble clef, a key signature of one sharp (F#), and a time signature of 2/4. The melody is composed of eighth and sixteenth notes, with some beamed eighth notes. The second staff continues the melody with similar rhythmic patterns. The third staff features a repeat sign (double bar line with two dots) and a fermata over a half note. The fourth staff continues the melody with a fermata over a half note. The fifth staff continues the melody with a fermata over a half note. The sixth staff continues the melody with a fermata over a half note. The seventh staff continues the melody with a fermata over a half note. The eighth staff contains two first endings, labeled "1." and "2.", separated by a repeat sign. The ninth staff contains a triplet of eighth notes, labeled "3", and the word "Fine" above the staff. The tenth staff continues the melody with a fermata over a half note.

\*Geef miech dreij daog\*



*D.S. al Fine*